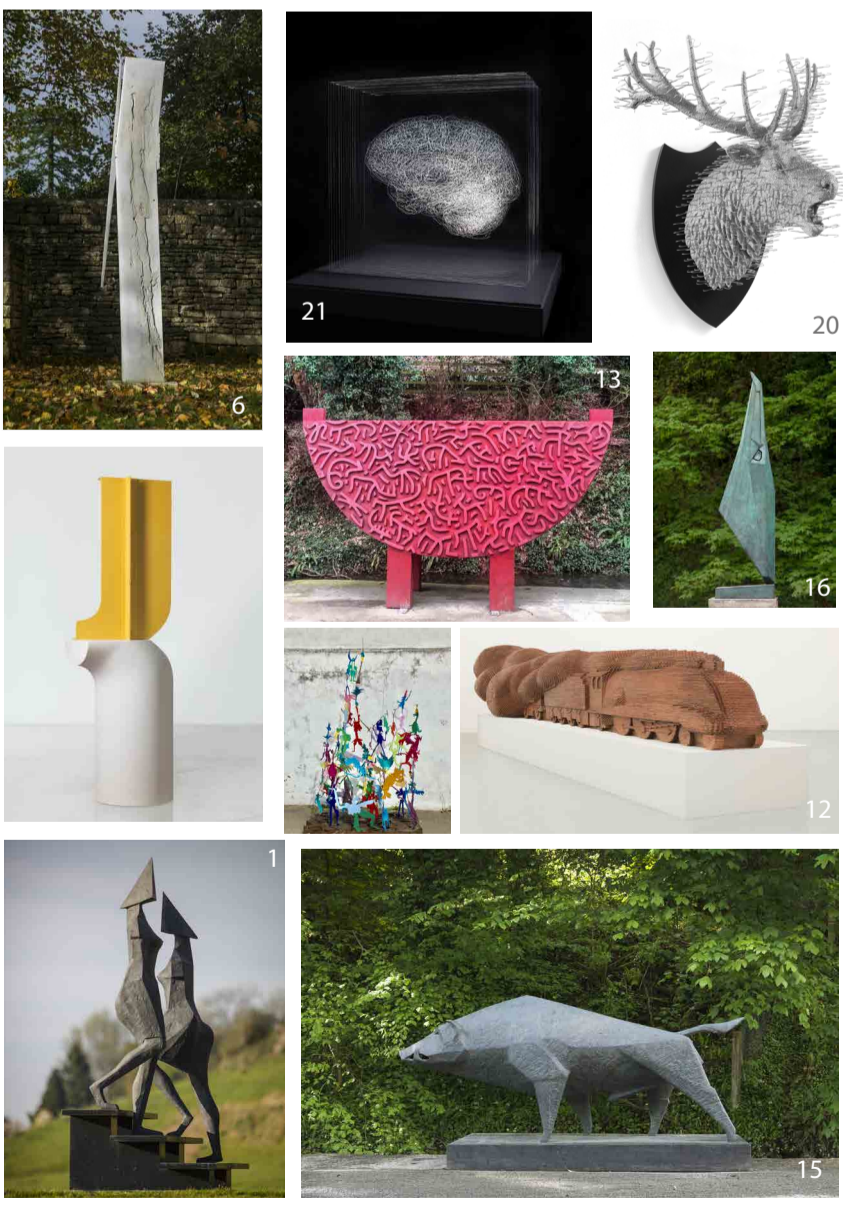


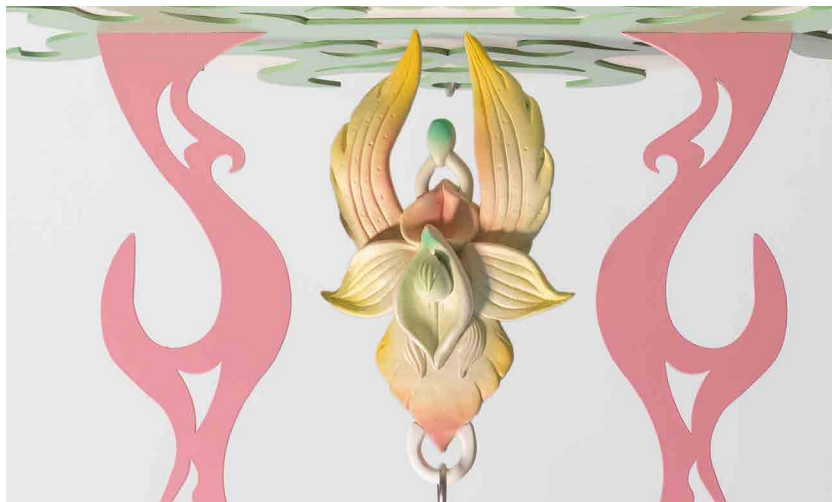
- Key
- Ground Level Sculptures
 - Level -2 Sculptures
 - Pangolin London
 - Ceramics Windows
 - Spotlight Artists

Sculpture Trail Map

Sculptures



- 1** Lynn Chadwick
Stairs
1991, Bronze
Edition of 9
- 2** Charlotte Mayer
Rising
2013, Bronze
Edition of 6
- 3** Charlotte Mayer
The Thornflower
2006, Bronze and stainless steel
Edition of 12
- 4** Charlotte Mayer
Luna
2008, Bronze
Edition of 8
- 5** Lisa Traxler
Outer Space
2023, Ink on paper
Edition of 20
- 6** Ann Christopher
The Edge of Light
2002, Bronze
Edition of 5
- 7** Lisa Traxler
Transformation 3
2023, Ink on paper
Edition of 30
- 8** Lisa Traxler
Transformation 5
2023, Ink on paper
Edition of 30
- 9** Charlotte Mayer
Turning
2015, Bronze
Edition of 5
- 10** Geoffrey Clarke
Post Inert Phase II Disc
1986, Aluminium
Edition of 6
- 11** Charlotte Mayer
Voyager
1994, Bronze
Edition of 8
- 12** David Mach
Darlington Train Maquette
1997-2020
Bronze
- 13** Jon Buck
Ark: High and Dry
2017, Bronze
Edition 1 of 3
- 14** Bruce Beasley
Thrust
1993, Bronze
Edition of 9
- 15** Terence Coventry
Boar II
1999, Bronze
Edition of 5
- 16** Terence Coventry
Monumental Gannet Head
2010, Bronze
Edition of 5
- 17** Terence Coventry
Torso II
2016, Bronze
Edition of 10
- 18** Lynn Chadwick
Sitting Couple (C93)
1989, Bronze
Edition of 9
- 19** Steven Gregory
Me & My Friends
2005, Bronze
Unique
- 20** David Mach RA
Silver Hart
2016, Coat-hangers
Edition of 4
- 21** Angela Palmer
The Last Frontier
2021, Engraved Glass
Unique
- 22** Charlotte Mayer
Largo
2020, Bronze
Edition of 9
- 23** Ceramics Spotlight
Latika Nehra
Hanna Salomonsson
Bisila Noha
Rose Schmits
- 24** Jon Hoskin
Big V
1963, Welded Steel
Unique
- 25** Almuth Tebbenhoff
The Petrified Wall I
1994-2003, Painted Steel
Unique
- 26** Jon Buck
All the Running You Can Do
2022, Birchwood relief
Unique
- 27** Julie Brook
Firestack, Winter
2016, Photographic print on aluminium
Edition of 7



Engaging with – and responding to – the aesthetic of 18th century Chinoiserie in electric hues, Hannah Lim's sculpture reimagines Orientalist iconography with a rich mythology of her own making. Her recent transition into bronze work as part of her residency with Pangolin London adds a new dimension to her practice.

(In the Gallery)
26 July - 14 September 2024

Hannah Lim: The Enchanted Orchid

Exhibitions

Pangolin London's Sculpture Trail includes large scale works by a host of artists, both within the building and canalside at Kings Place, and its fast developing reputation as one of the UK's most dynamic Sculpture Trails. Please contact Pangolin London for further details and sales enquiries.

Pangolin London is one of London's few galleries dedicated to exhibiting sculpture.

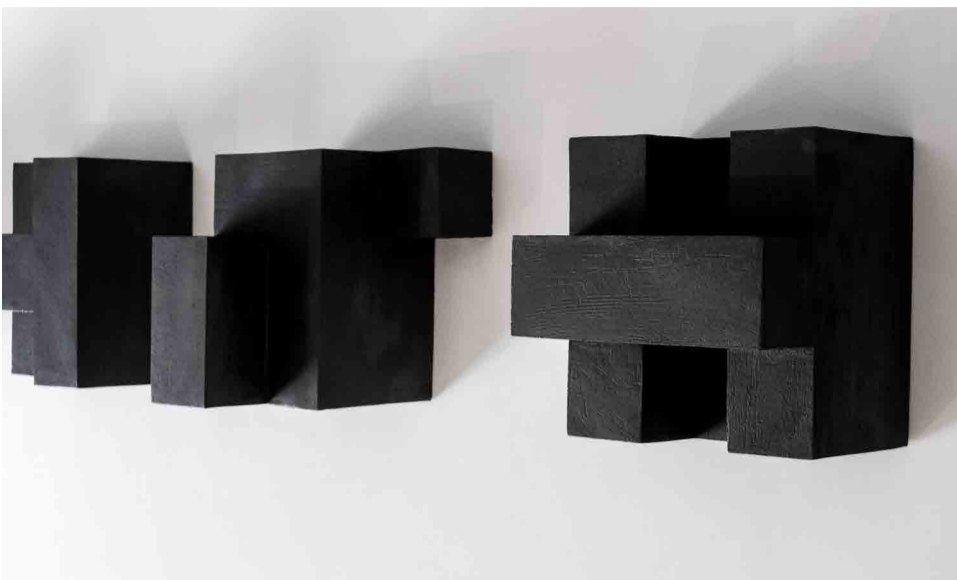
About

KINGS PLACE SCULPTURE TRAIL

2024

PANGOLIN LONDON

All works are available for sale.
Please contact the gallery for more information on 020 7520 1480 or email gallery@pangolinlondon.com.
Follow us on Instagram: @pangolin.london
Facebook: Pangolin London
Twitter: PangolinLondon



This deeply personal body of work explores themes of loss, memory, and understanding through innovative combinations of digital technology and traditional sculpture. Rewiring will feature wall sculptures in ceramic and wood, alongside etchings and drawings.

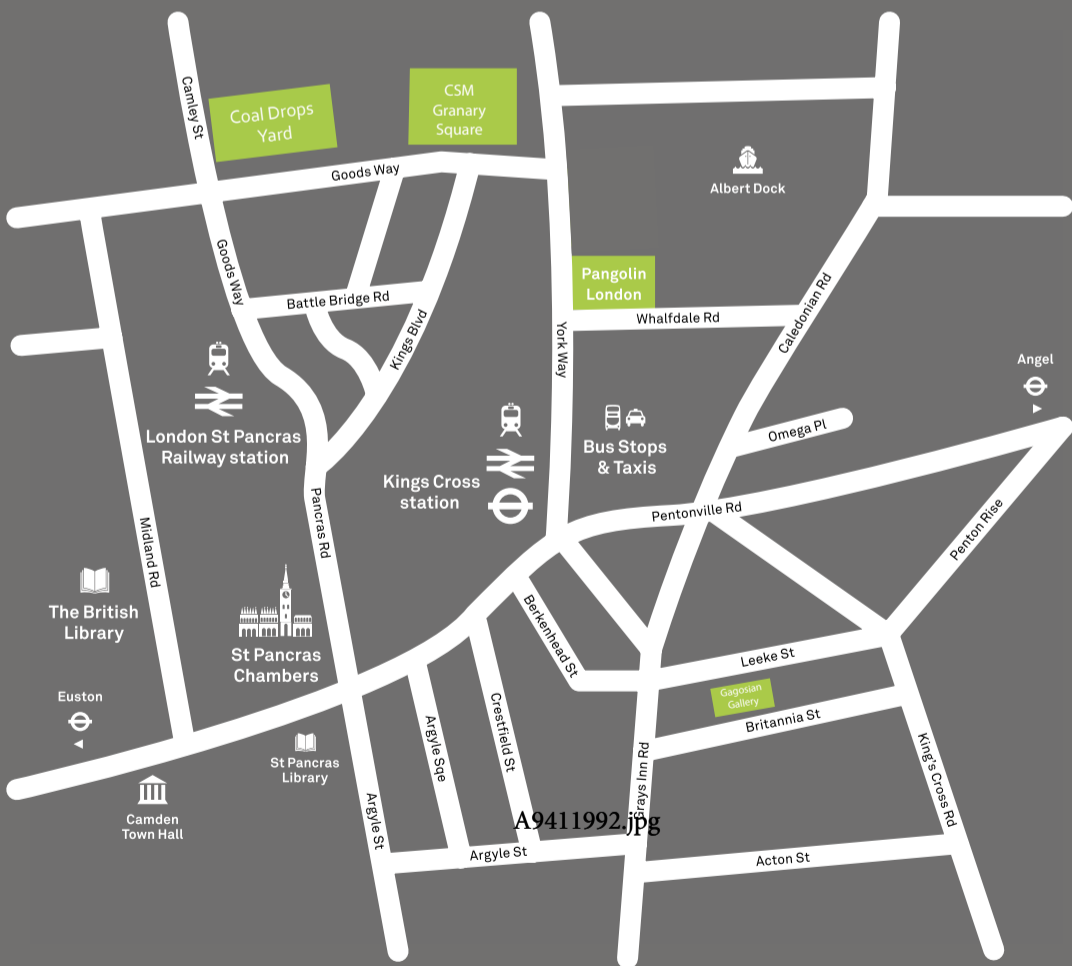
(B-1 and Window Gallery)
17 July - 23 December 2024

Zachary Eastwood-Bloom: Rewiring

Exhibitions

Find us...

Free Admission



Pangolin London
Kings Place
90 York Way
London N1 9AG
📍 Kings Cross

Kings Place Building Opening Hours
Mon - Fri 8am - 10pm
Sat, Sun 10am - 10pm
Pangolin London Opening Hours
Mon - Tue By Appointment Only
Wed - Sat 10am - 6pm

Telephone (0)20 7520 1480
gallery@pangolinlondon.com
www.pangolinlondon.com

© All Content and Images
Copyright Pangolin London 2024